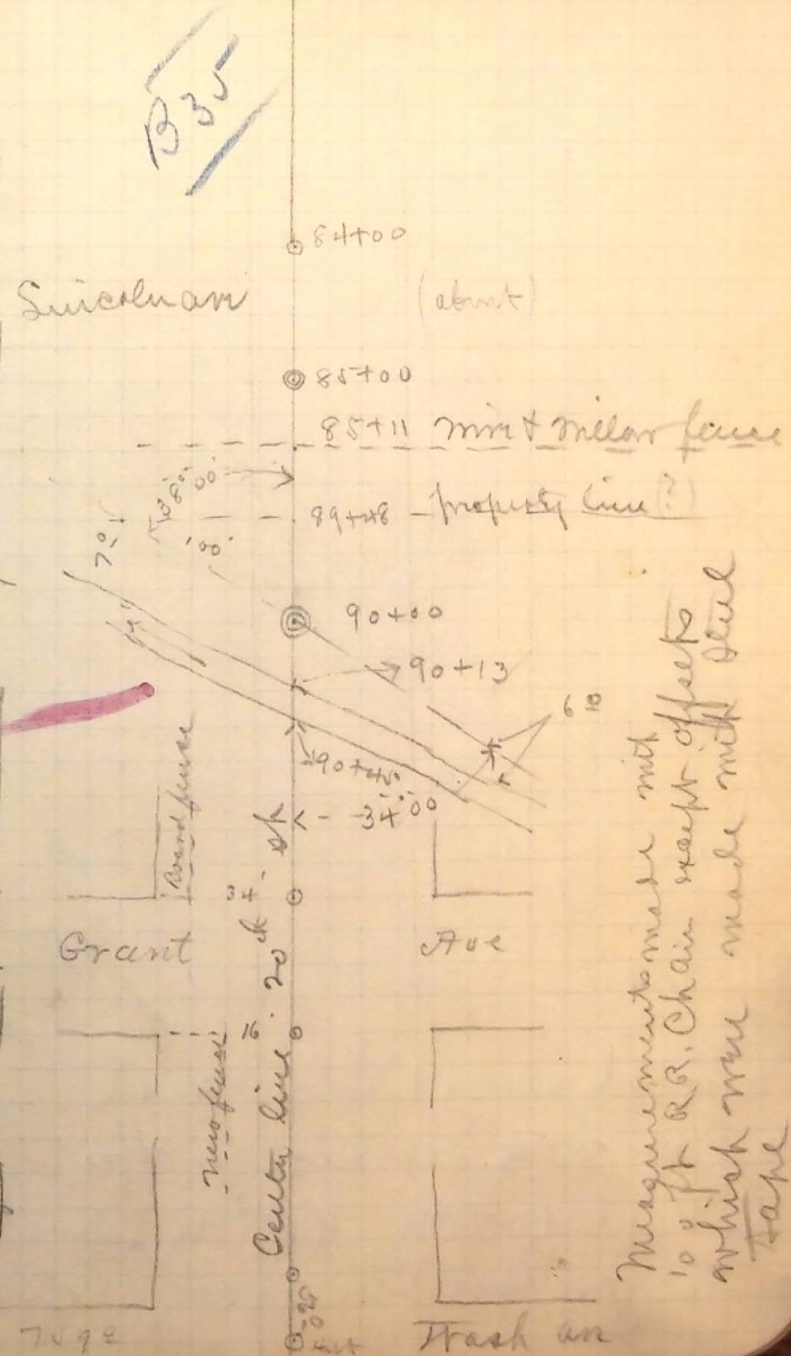


5/29/90 page 26 this book
 for notes of which see notes done in
 70+00 B.S. on point on rail
 these picked up line at Sta
 for line + 42 long for chaining,
 of wall are checked about 0¹⁰ salt
 ran this line to Hub set center
 for further notes see diagrams
 and set Hub 562 west for west line wash an
 B.S. mt # 5 angle B + west 90° 00
 these just over Hub center 20th St
 wind blowing a hurricane.
 back 7092. See Note
 20th St distant 7092 these checked
 mt # 5 (24th St wash) S.C. + set Hub center
 just over mt # 8 (wash ant 21st St) B.S.
 see page 26 this book
 20th St Washington Am West
 Suprav for the opening of
 Tuesday All. June 17th 1890

Note
 very muddy & dusty. This line should be checked
 before being permanently established. (34)



Measurements made with
 100 ft R.R. Chain except offset
 which were made with steel
 tape

mt # 8 7092